

WHERE

DUBAI

[Reg. No. :- 1008889]

Captain Zarir I. (Partner)
Lead Auditor, MBA, DipMarSur., FICS, AFNI, FIIMS, CII
CERTIFIED MARINE SURVEYOR-NAMS-CMS (118-960)
OVID INSPECTOR, IIMS -GLOBAL VICE PRESIDENT
The CITADEL, # 806, BUSINESS BAY
PO Box 191105, Dubai, U.A.E.
Tel : +971 4 4518060 / +971 4 4232884
const24x7@constellationms.com

FUJAIRAH

[Reg. No. :- 10181472]

Captain Vispy Dadimaster
#103, Al Maha Tower, Opp Fujairah Port
P.O. Box 9701, Fujairah, U.A.E.
Tel: +971 9 2236344, Fax: +971 9 2236343
Mobile: +971 50 1405188
const.fujairah@constellationMS.com

ABU DHABI

[Reg. No. :- CN-1252344]

Captain Nishant Alfred Miranda
Abu Dhabi Island, Cornich Street, East 5, Plote, C42, Office 1039,
Ahmed Yousef Khalifa Tower, PO Box 27818, Abu Dhabi, UAE
Tel: +971 2 6713320, Fax: +971 2 6713325
Mobile: +971 56 1421168
const.abudhabi@constellationMS.com

LONDON

[Reg. No. :- 7931920]

Captain John Noble / Mr. Julien Gressier
2-4 Austin Street, (Off Shoreditch high Street)
London E2 7NB
Tel: +44 207 739 7177 / +44 7785 226553
const.london@constellationMS.com

SINGAPORE

Tony Lee
10 Anson Road, No.14/01
International Plaza, Singapore (079903)
Telephone: (65)6223 3071
const.sgp@constellationms.com

Our Stars :

Captain Zarir Irani	+971 508979103
Captain Nishant Alfred Miranda	+971 561421168
Captain Vispy Dadimaster	+971 501405188
Chartered Engr. Shenoy	+971 501390779
Jos Roy	+971 501889614
Mohammed Farooq Shedde	+971 501889613
Ouseph Joshi K.J.	+971 507348621
Thilina De Silva	+971 529815089
George Joseph	+971 529815049
Engr. Midhun Mohan	+971 564849387
Naval Architect Vignesh Prabhu	+971 568288187
Engr. Fehad Ansari	+971 501527939
Engr. Mohamed Tarek	+971 553686378
Naval Architect R. Syed Yasir Ahmed	+971 506518843
Chief Engineer (Marine) Alborze Irani	+971 509626130



Cert. No. 44 100 11080109

Call Us:

24hrs central contact: +971 4 4518060 / const24x7@constellationms.com

WHAT WE DO



- Pre-purchase inspections and valuations
- Pre-risk assessment surveys
- Hull and machinery damage / repair surveys
- Ultrasonic testing of hatch cover or watertight integrity verification
- IMDG cargo surveys, suitability certificates
- Pipe lay vessel risk assessment at anchorage
- Pre discharge condition survey steel Cargo
- Joint inspection of project cargo during discharge operations / loading and stowing inspection
- Investigations into vessel collisions and damage assessment
- Oil pollution Investigation and assistance by our team
- Heavy lift cargo inspection and warranty surveys for lashing & suitability



INDEPENDENCE AND EXPERIENCE IN SURVEYING

INDEPENDENT
ACCIDENT INVESTIGATORS &
CLAIMS
CONSULTANTS / SURVEYORS



DUBAI - FUJAIRAH - ABU DHABI - LONDON - SINGAPORE
(ESTD 2007) (ESTD 2008) (ESTD 2010) (ESTD 2012) (ESTD 2013)

www.constellationms.com

WHY CONSTELLATION



Internationally benchmarked, Independent report presentation, coupled with speed of response, has propelled CONSTELLATION MARINE SERVICES to offer consultancy and survey services for all international group of protection & indemnity clubs. We also offer assistance to the maritime legal fraternity, covering both commercial and technical areas, having completed over 15500 assignments by start of 2018.

A team of professional and experienced Marine consultants with Master Mariners/ Engineers/ Naval Architects for the purpose of rendering consultancy services to Marine asset owners, Hull and Machinery underwriters, Ports, Marine transport companies, Liners, Marine cargo interests, Cargo underwriters, Ship owners and charterers. We have established ourselves in handling various facets of marine services including pollution claims on behalf of P & I clubs. The organization has grown from strength to strength and to date, conducts surveys for a large number of worldwide principals.

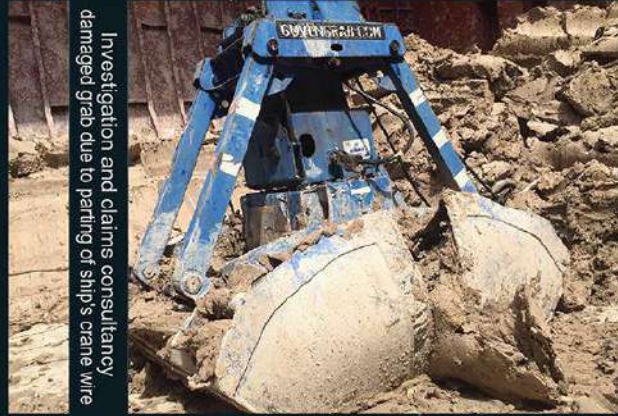
Our Phone app will empower you to:

- * Track Survey Appointments
- * Access Real time photos taken by attending surveyor
- * Simplifying appointment of Marine Surveyor & avail 5 % discount on every nomination via our app.



Accredited Flag State authorised agents Antigua & Barbuda

RECENT PROJECTS



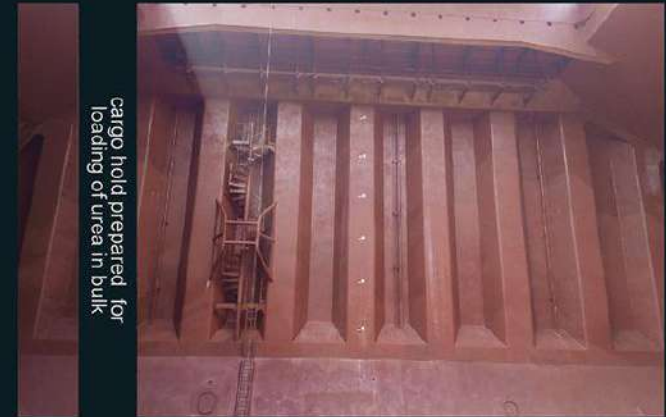
Investigation and claims consultancy damaged grab due to parting of ship's crane wire



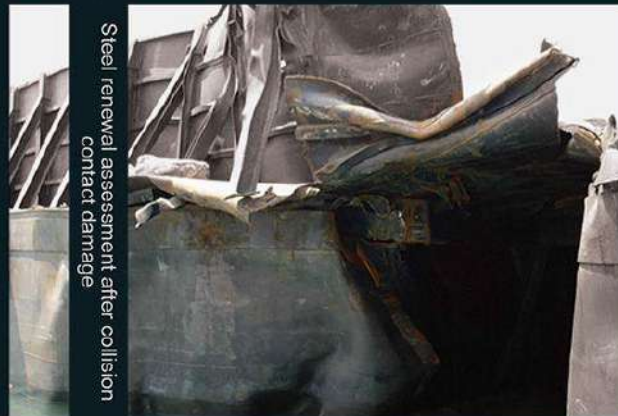
Steel renewal assessment of keel post grounding



Hull and Machinery claims engine damage



cargo hold prepared for loading of urea in bulk



Steel renewal assessment after collision contact damage



Cargo damage claim due to decomposition of cargo